

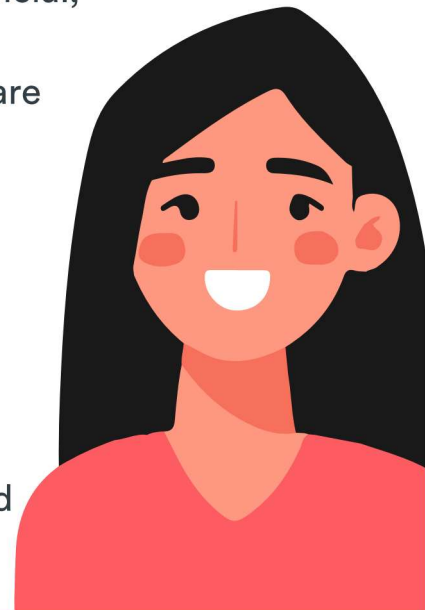
Waltham Forest Therapeutic Marketplace

Therapeutic support for adults and children affected by domestic and sexual abuse

Domestic abuse is the misuse of power and control, usually but not always, by one person over another, within intimate or family relationships. It can be psychological, physical, sexual, financial, emotional, so call honour-based violence or coercive and controlling behaviour. Children living with domestic abuse are also affected.

Solace supports survivors to access a range of therapeutic services for themselves and their children.

Services include counselling, group work and children and young peoples creative therapies. In cases where these services are not suitable, we aim to support survivors to find an alternative.



For more information about support and/or to make a referral, please contact Solace:



✉ wftherapeuticmarketplace@solacewomensaid.org

☎ 0300 330 5479
Line open Monday–Friday 10am–2pm

